

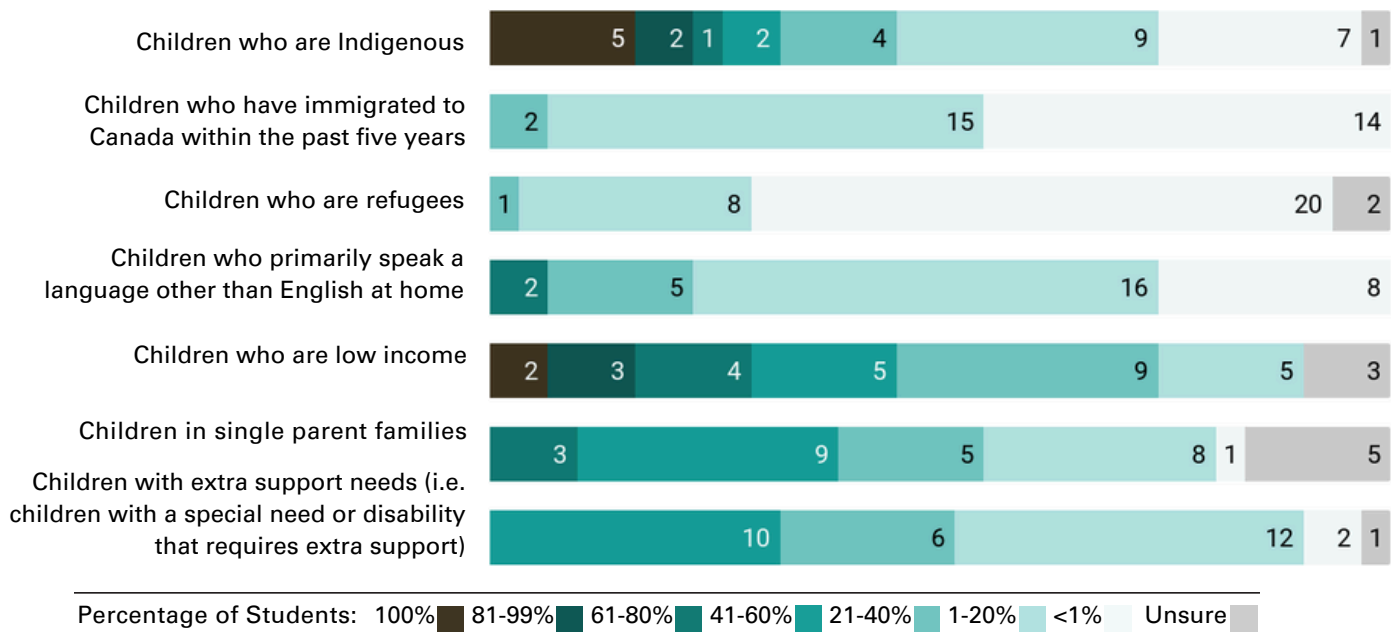
33 schools
up to \$10,000 per school
9,745 k-12 students
9 provinces &
1 territory

\$320,800
given directly to schools



Delivered directly to schools, the Farm to School Canada Grants program is transforming school food in Canada by providing access to funding, training, and other resources to deliver meal services that bring more healthy, local and culturally appropriate foods into schools where students can create their own plates and build their own bowls while also providing students with opportunities to engage with the food system in their community through hands-on food literacy.

Schools that serve...



The figure above shows student population demographics of 31 of the 33 grant recipient schools as of the 2022/2023 school year. The number on each bar section indicates the number of schools who selected that category.

Grant Activities



Grant activities took place between September 2022 and June 2024.

81%

of schools started or continued salad bar style meal service as part of their farm to school program



94%

of schools engaged students in hands-on learning.

91%

of schools were able to purchase equipment to facilitate school food activities.



87%

of schools plan to continue food literacy activities after the end of the grant term.

Salad Bar Meal Services Going Forward

When asked whether their salad bar (or meal program adaptation) will be continued after the grant period and why, grant recipients responded:

Yes (81%)

- beneficial to students (health and enjoyment)
- effective systems are now in place
- improves community relationships
- provides good opportunities for learning

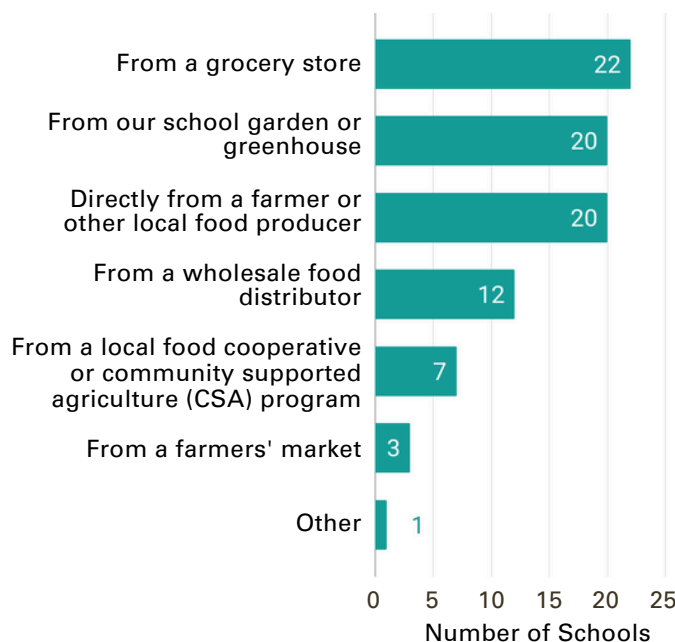
No (7%)

- unable to convince cafeteria food providers to integrate on an ongoing basis

Unsure (13%)

- if there is teacher and/or admin support
- if funding can be secured

Meal Service Food Sources



The chart above shows the food sources that schools shared they use for their meal programs.

During the grant term, students:

- Tasted local foods
- Gardened at school
- Visited a farm, fisher, forager, or other producer
- Composted food waste
- Cooked/preserved local food





From Challenges to Keys to Success

Schools were asked about challenges they encountered in their farm to school program and what strategies they found useful in addressing those challenges.

Themes were compiled for both questions using qualitative data analysis. It was found that the most commonly stated answers for both questions largely overlapped as shown in the Venn diagram below. These overlapping themes provide valuable insights into the keys to success for farm to school programs.



Impact Statements

“We have been able to upgrade our kitchen and purchase the needed equipment to preserve, store and prepare food. We have also developed community partnerships that not only support our food program, but engage our students in learning about nutrition, traditional foods, gathering and gardens.”

“Receiving the F2SC grant was instrumental in getting our program off the ground. With the money received students have expanded their horizons in all aspects surrounding food. We have been able to focus on traditional foodways and have incorporated a plethora of culturally appropriate food. Students have grown their own food, have learned to process animals like fish, geese, and bison, and have become stewards of their own food sovereignty.”

Grant Impacts

Public Health

97% of schools increased students' **willingness to try new vegetables and fruits.**

94% of schools increased the **amount of healthy food that they procure and provide to students.**

87% of schools increased students' ability to **access healthy food in a dignified way** regardless of their ability to pay.

Education & Learning

94% of schools increased the **number and quality of opportunities for students to learn and demonstrate food skills** (ex. gardening, food preparation, etc.).

94% of schools **created a greater sense of vibrancy and excitement** in the school.

Environment

84% of schools increased the number of school **events and activities that raise awareness about sustainable food system practices.**

94% of schools increased the amount of students that are **engaged in their local food system** while at school.

Community Economic Development

87% of schools increased the **amount of local food they procure and provide** to students.


Stories


“ We learned how to grow vegetables, and it taught us the importance of local organic food.” – Cameron (student)
[Read the full story](#)

“ It is so wonderful to see the variety the students choose and the excitement to try new things.” – Teacher [Read the full story](#)



Salad bar that is a part of Kings County Academy's transition from a contracted food service provider to a PTA-run cafeteria. [Read the full story.](#)

 Wisset Elementary School Garden ([click to watch](#))

 New food program gives high school students lessons in sustainability – and tasty tacos ([click to watch](#))



Find more stories [here](#).



Thank You

A very special thank you Whole Kids Foundation for making the Farm to School Canada Grant program possible. These grants embody F2CC’s mission to transform how food is experienced, learned & celebrated in all schools across Canada and they are a testament to our belief that supporting school food systems can lead to broader, lasting change.

Each year we’re amazed and inspired by what our grant recipients achieve.

We look forward to welcoming the 2024-2026 Grantees this fall.



Child holding a freshly harvested beet (left) and children gathered around an elder (right) at Round Hill School. [Click to watch their story.](#)

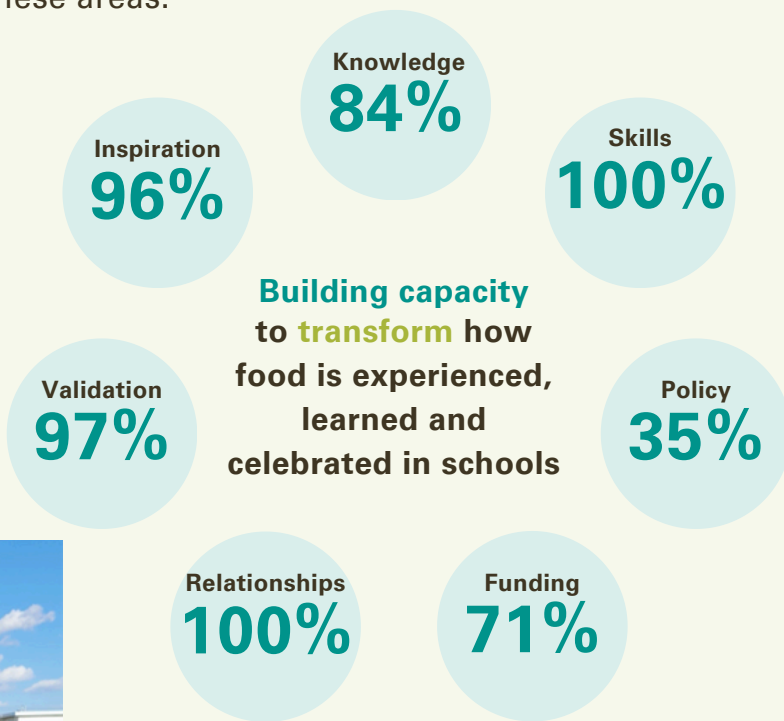


Capacity Building Impacts

In F2CC’s work, we strive to grow capacity in 7 key ways:

- **Knowledge & skills** about key themes related to school food
- Ability to **influence policy** (federal, provincial, or local)
- **Funding** and fundraising capacity
- **Relationships** and connections
- **Validation & inspiration** around the importance of the work

Farm to School Canada Grant recipients shared that their grant experience increased their capacity in these areas:





Appendix: A complete list of program impacts as reported by recipients of the 2022-2024 Farm to School Canada Grant Recipients.

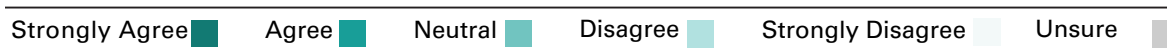
This section provides a fuller set of evaluation data using the indicators in the Farm to School Evaluation Framework for Canada. **The Framework, along with other evaluation tools and resources can be found [here](#).**

Please note:

- **[Brackets]** after a statement reflect a specific Framework indicator that has been determined to be a “priority” indicator, and therefore assigned a unique identifier.
- n=31

Public Health

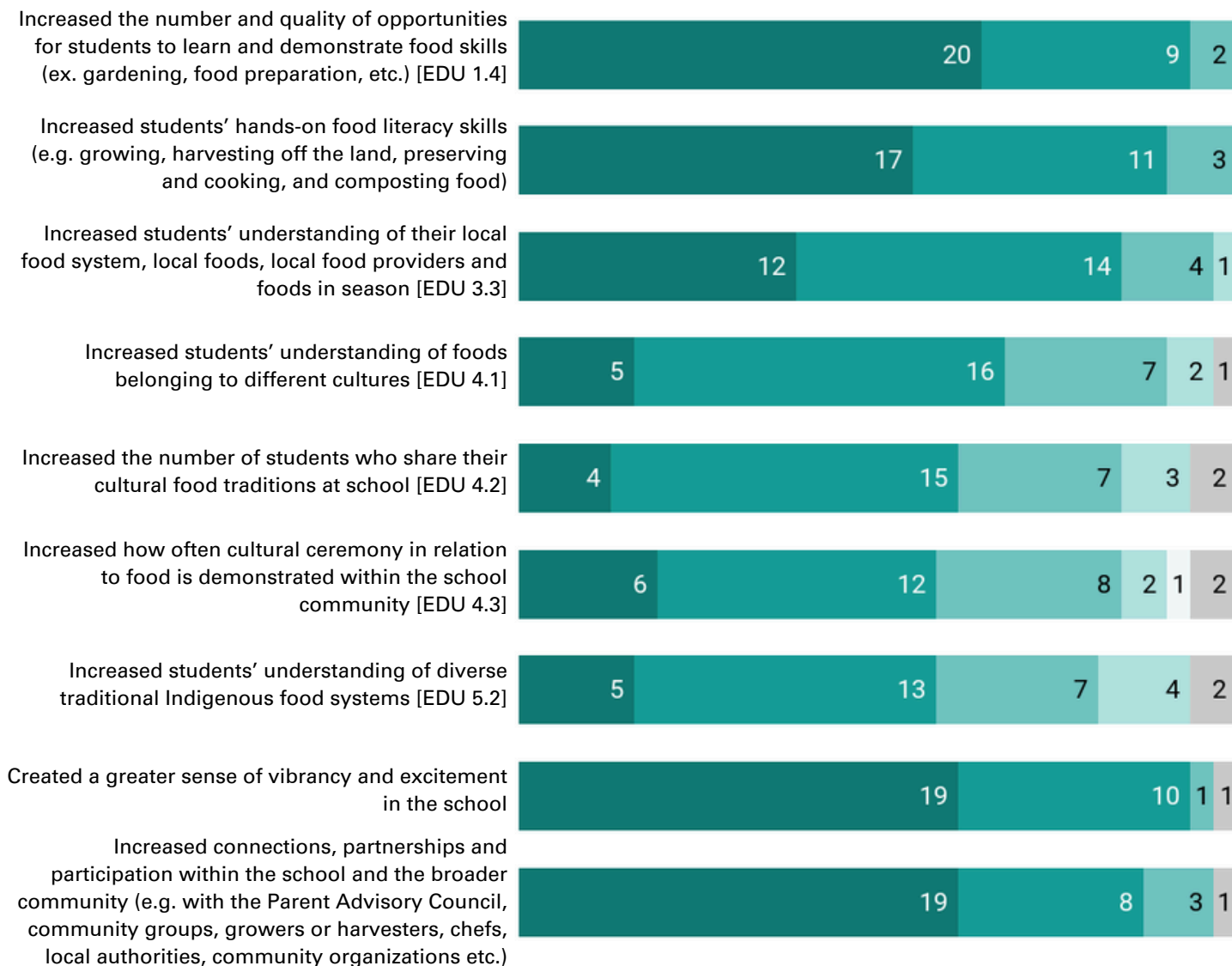
Receiving a Farm to School Canada grant has impacted our school community in the following way(s):





Education & Learning

Receiving a Farm to School Canada grant has impacted our school community in the following way(s):

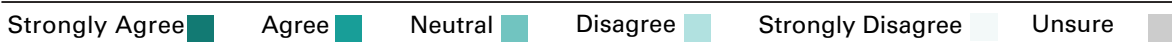
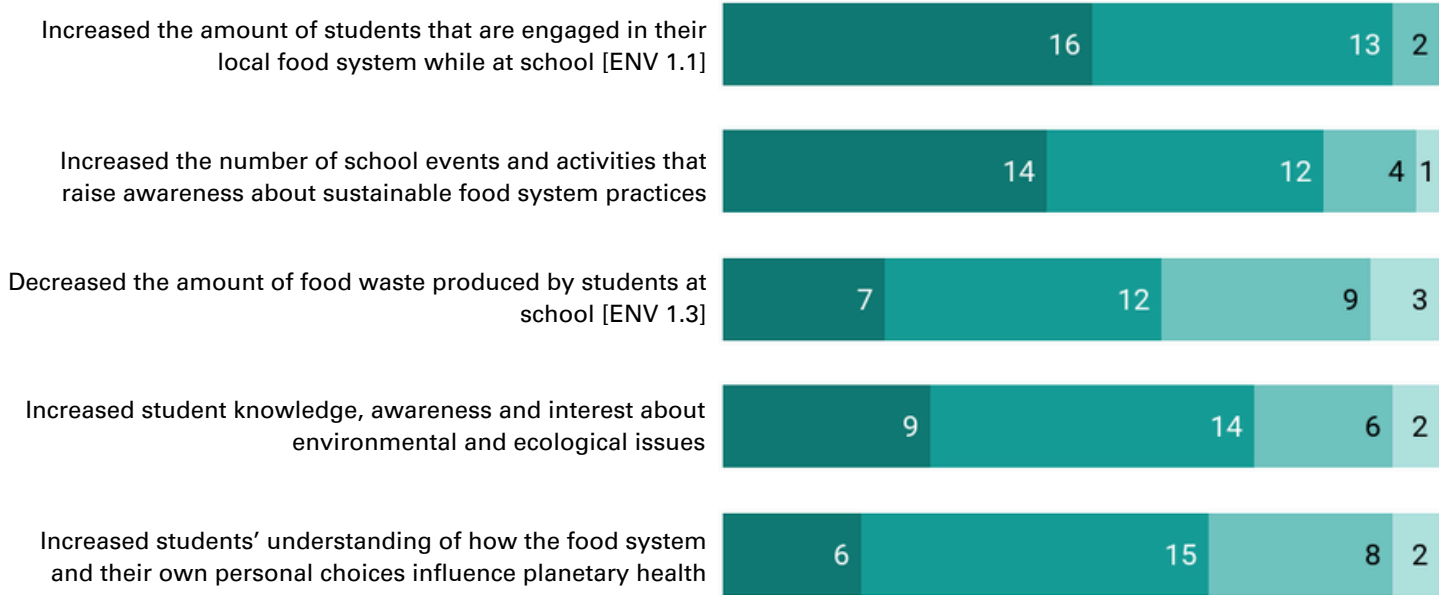


Strongly Agree ■ Agree ■ Neutral ■ Disagree ■ Strongly Disagree ■ Unsure ■



Environment

Receiving a Farm to School Canada grant has impacted our school community in the following way(s):



Community Economic Development

Receiving a Farm to School Canada grant has impacted our school community in the following way(s):

