



Made possible
in partnership with
The Schad Foundation



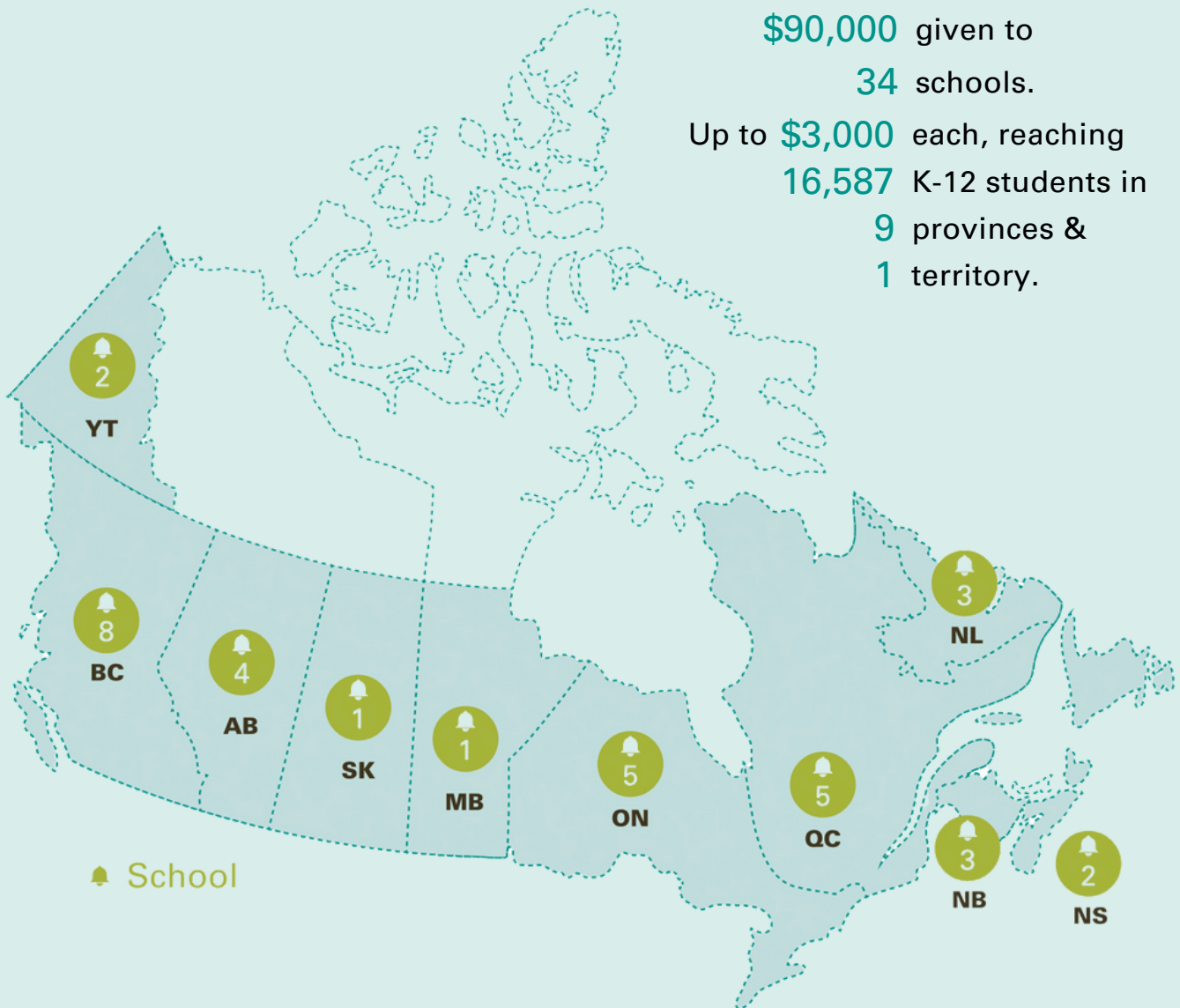
Dig In! Seed Grants

2024/25
school
year!

Seed Grants provide schools with access to funds, knowledge and inspiration to 'Dig in' to farm to school by making small, positive changes in their school food environments.

\$90,000 given to
34 schools.

Up to \$3,000 each, reaching
16,587 K-12 students in
9 provinces &
1 territory.



School

Impact Statements

- “ We had the chance to try Indigenous foods in our cafeteria with a manoomin soup and bannock and jam offering. It sold out so fast. We will continue to have it on the menu at our school.”
- “ We have furthered our goal of sustainability and access to locally grown produce. Our program has enhanced the partnership we currently are building with the local food recovery. ”
- “ The program supports cross-curricular education, promotes sustainability, and helps students become more food-literate, environmentally aware, and future-ready citizens.”
- “ We got to take kids out onto the land ice fishing and they loved every minute of it. It allowed newcomer kids to learn about different food sources and how to fish in the winter in Northern Ontario.”
- “ Overall, the grant has enhanced our outdoor learning environment and encouraged greater student connection to the land and their local food systems.”
- “ [The grant] expanded student understanding of locally grown foods and the economics around food production when visiting a local farmer's market.”
- “ We were able to bring in local producers to present to our Food Studies classes. This included local vegetable, poultry, eggs, cattle, bison farmers. Our Food Studies program was able to purchase locally sourced proteins and produce from said farmers. This allowed students to better understand the food cycle around our city. ”

Grant Activities



took place between January and June 2025.*

94%

of schools engaged students in hands-on learning



77%



of schools were able to purchase equipment to facilitate school food activities

97%

of schools plan to continue food literacy activities after the end of the grant term



*Reporting throughout includes responses from 30–31 schools.



Students working in their new garden space at École des Grands-cèdres. [Read their story.](#)

Grant Impacts

Public Health

90% of schools increased the **amount of healthy food they procure and provide to students.**

93% of schools improved the **school food environment** to better promote healthy foods and make them easy to access.

97% of schools increased students' **willingness to try new vegetables and fruits.**

Education & Learning

93% of schools increased students' understanding of their local food system, local foods, local food providers and foods in season.

70% of schools increased the **number of students who share their cultural food traditions at school.**

Environment

80% of schools increased students' understanding of how the **food system and their own personal choices influence planetary health.**

93% of schools increased the amount of students that are **engaged in their local food system** while at school

Community Economic Development

80% of schools increased the **amount of local food they procure and provide to students.**

Stories

“This initiative has not only provided fresh produce but has also served as a platform for education, sustainability, and community building. It stands as a testament to what can be achieved when compassion meets action”. — Medoria Stabber [Read the full story.](#)

“I like that we can grow healthy food options instead of running to get processed foods at the closest fast-food place.” — Philo K., Grade 7 Student [Read the full story.](#)

“I now know that I love baking and have a really good skill when before I felt like there was nothing I could do right.” — English Learning Centre Student [Read the full story.](#)

“I’ve never made my own salad, I love it”. — Student [Read the full story.](#)



Sylix Teachers Fostering Students' Connection to Waterways and Salmon at Ecole Peter Greer Elementary. [Read the full story.](#)



Find more stories [here.](#)



Food literacy initiative at Jack James High School. [Read the full story.](#)



Hands-on food literacy at Ecole Leila North Community School. [Read the full story.](#)

Capacity Building Impacts

In F2CC’s work, we strive to grow capacity in 7 key ways:

- **Knowledge & skills** about key themes related to school food
- Ability to **influence policy** (federal, provincial, or local)
- **Funding** and fundraising capacity
- **Relationships** and connections
- **Validation & inspiration** around the importance of the work

Dig In! Seed Grant recipients shared that their grant experience increased their capacity in these areas:



Thank You!

We’re so proud of the 2024/25 Dig In! grant recipients and inspired by their achievements! A very big thank you and congratulations to the participating school communities including educators, administrators, parents, volunteers, community partners & STUDENTS for their dedication and hard work in bringing these initiatives to life.

We would also like to extend sincere gratitude to The Schad Foundation for their generous support of the Dig In! Seed Grant Program. We look forward to welcoming a new round of grant recipients for the 2025/26 school year and to watching their programs grow.





Appendix: A complete list of program impacts as reported by recipients of the 2024/25 Dig In! Seed Grants.

This section provides the full set of evaluation data using the indicators in the Farm to School Evaluation Framework for Canada. **The Framework, along with other evaluation tools and resources can be found [here](#).**

Please note:

- All Farm to Cafeteria Canada grant recipients report on impact areas defined in the Evaluation Framework. Some outcomes may be achievable in the short-term, while others are expected to be medium to long-term. Progress reported is expected to vary depending on the scope and term length of the individual grant stream.
- **[Brackets]** after a statement reflect a specific Framework indicator that has been determined to be a “priority” indicator, and therefore assigned a unique identifier.
- The number on each bar section indicates the number of schools that selected that category.

Each of the figures below shows responses from 30 of the 34 2024/25 grant recipient schools.

Public Health

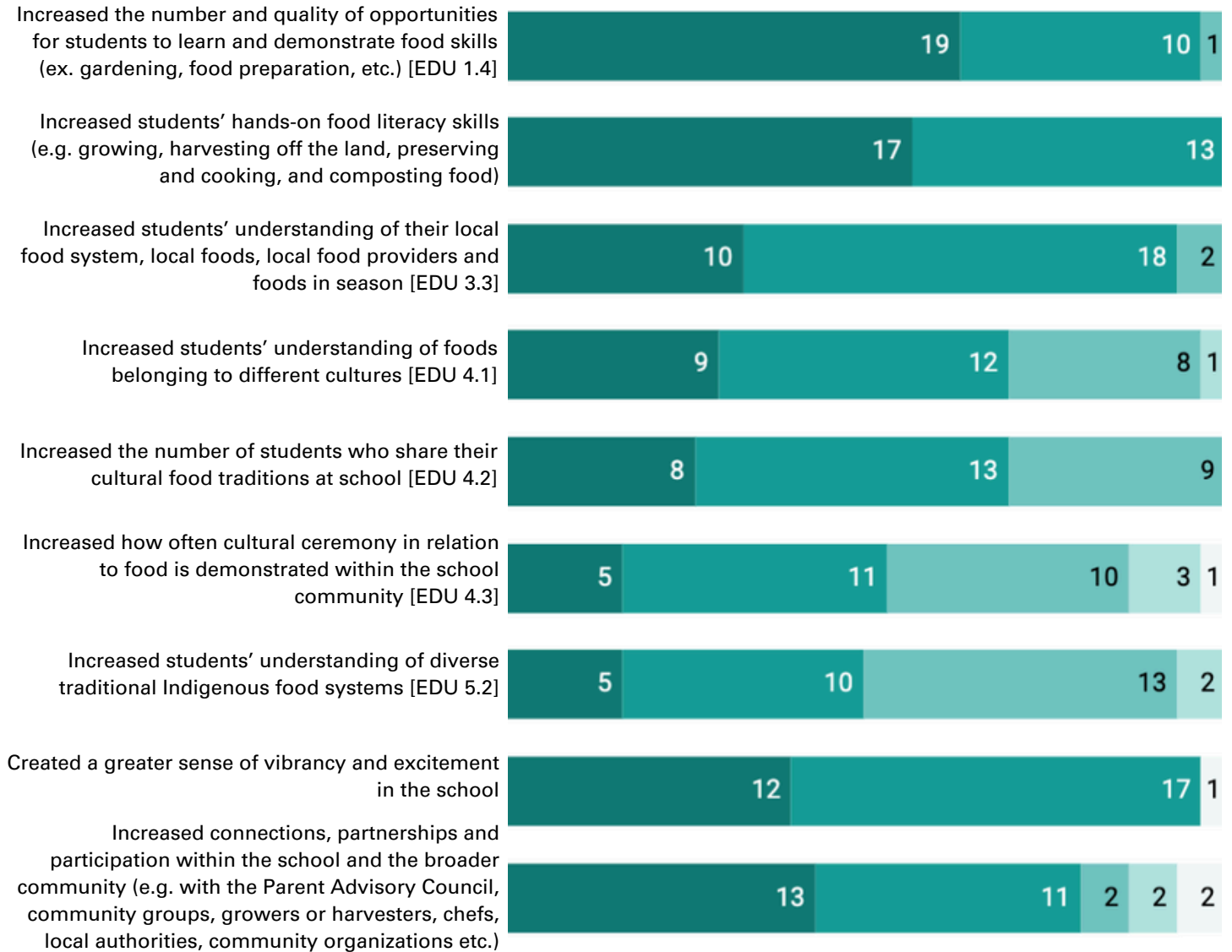
Receiving a Dig In! Seed grant has impacted our school community in the following way(s):





Education & Learning

Receiving a Dig In! Seed grant has impacted our school community in the following way(s):

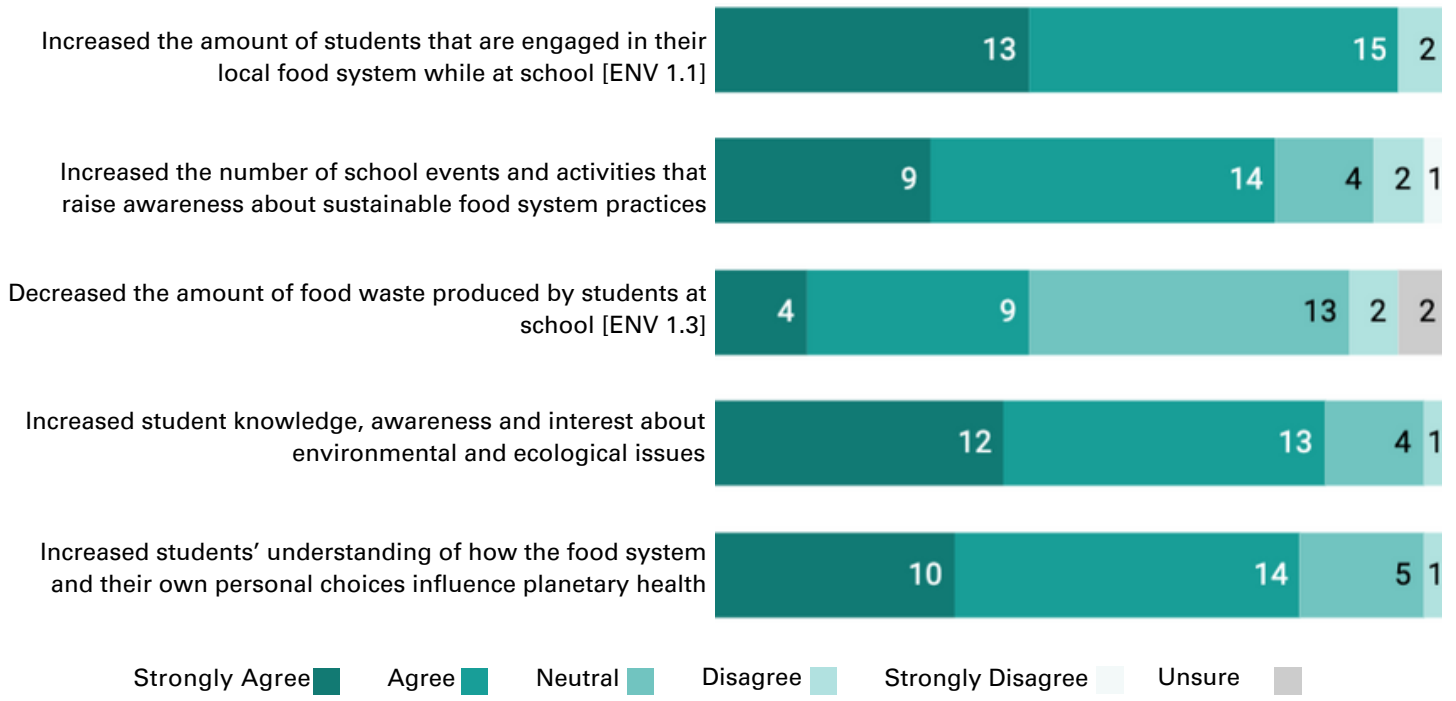


Strongly Agree ■ Agree ■ Neutral ■ Disagree ■ Strongly Disagree ■ Unsure ■



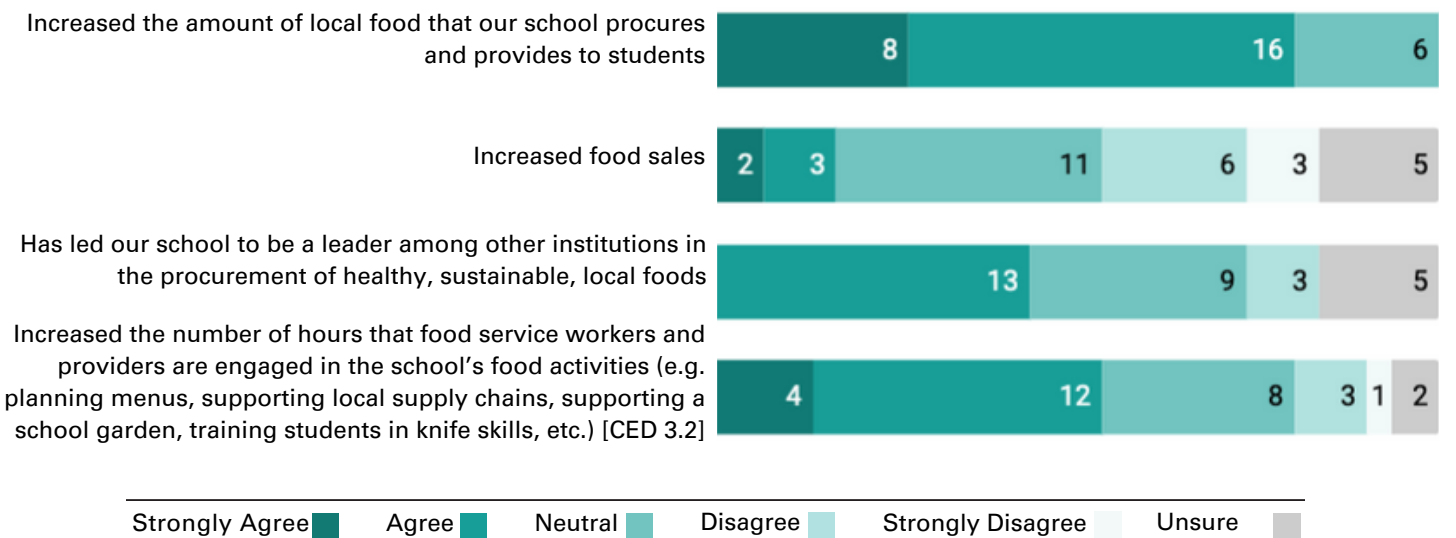
Environment

Receiving a Dig In! Seed grant has impacted our school community in the following way(s):



Community Economic Development

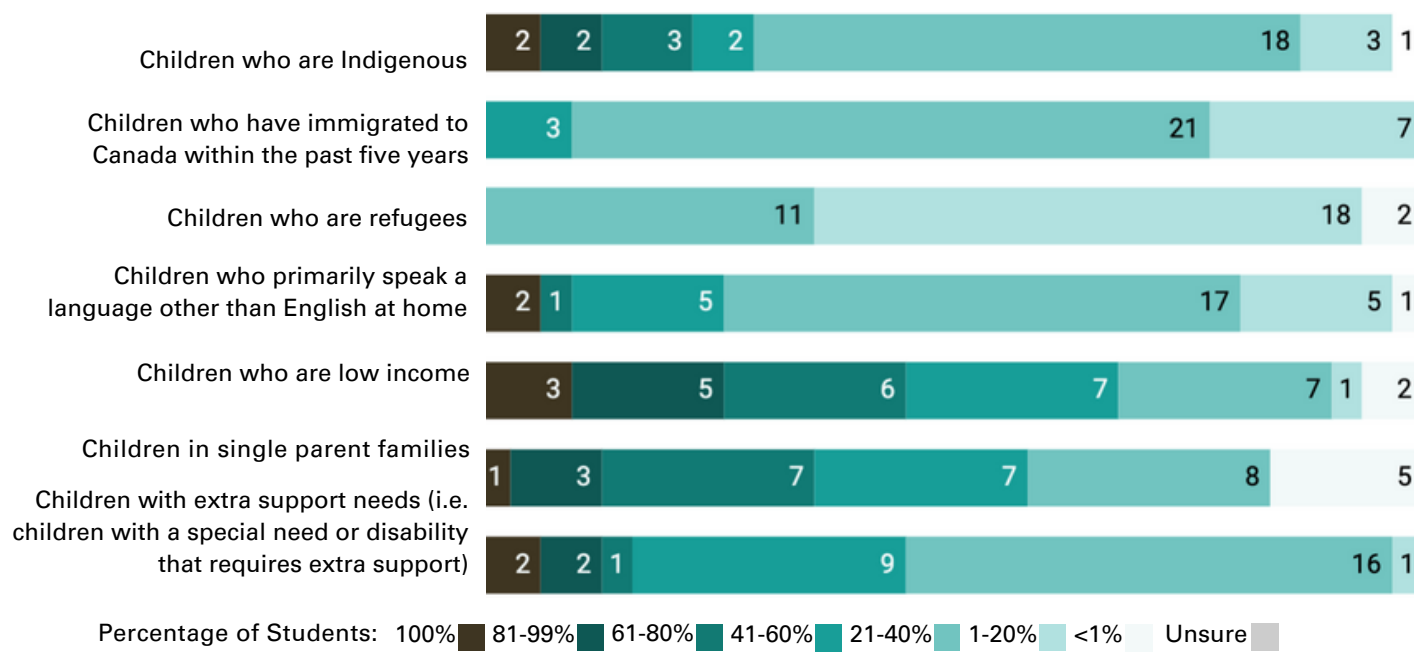
Receiving a Dig In! Seed grant has impacted our school community in the following way(s):





Appendix B: Student demographic information as reported by recipients of the 2024/25 Dig In! Seed Grants.

Schools that serve...



The figure above shows student population demographics of 24 of the 34 2024/25 grant recipient schools. The number on each bar section indicates the number of schools who selected that category.