



## **A Community Greenhouse in the Kootenays of British Columbia**

### **Why the Need?**

**Socio-economic** – growing awareness of food security, agriculture and sustainability contrasting with widening gulf of awareness in other sectors, most notably youth.

**Environmental** – energy, water, material resource conservation, climate change and food miles – a need to reduce energy & input costs associated with food

**Engage Community** – Community resiliency and capacity building for the future

### **Who's Been Involved**

24 community groups had input to design and program development

300+ volunteers from a diverse range of sectors and 30+ major funders and in-kind supporters

### **What Are the Goals**

Demonstrate, teach and inspire

Provide community with a hands -on project that would address the identified needs.

Serve as a catalyst and share results.

### **Outcomes**

The **Community Greenhouse** is an award winning, leading edge, low energy use, solar heated, water conserving, 3000 sq. ft. educational greenhouse opened in 2009

Through its operation and programs the **Community Greenhouse** addresses:

Food security, and the decline in agriculture in our communities and region.

Climate change, energy, water and resource conservation

Regional ecosystem and biodiversity conservation

Building community and leading by example.

### **Future Plans**

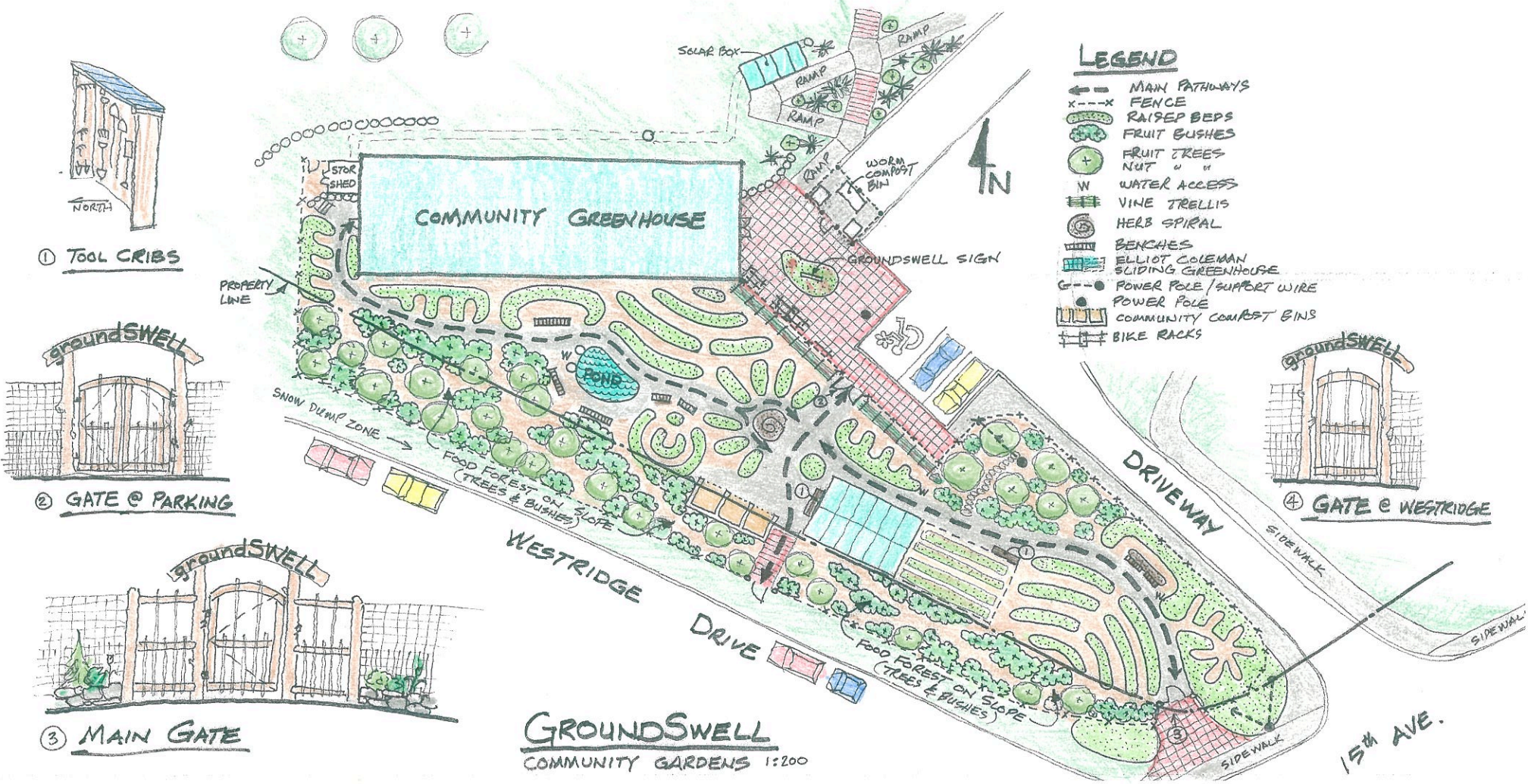
Development of Community Gardens adjacent to the Community Greenhouse

# The Community Greenhouse, Invermere, BC



### LEGEND

- ← MAIN PATHWAYS
- x---x FENCE
- RAISED BEDS
- FRUIT BUSHES
- FRUIT TREES
- NUT " "
- W WATER ACCESS
- VINE TRELLIS
- HERB SPIRAL
- BENCHES
- ELLIOT COLEMAN SLIDING GREENHOUSE
- G---● POWER POLE / SUPPORT WIRE
- POWER POLE
- COMMUNITY COMPOST BINS
- BIKE RACKS



① TOOL CRIBS

② GATE @ PARKING

③ MAIN GATE

④ GATE @ WESTRIDGE

**GROUND SWELL**  
COMMUNITY GARDENS 1:200