



Healthy, local and sustainable food in all public institutions



Farm to Cafeteria Canada News

Happy Chinese New Year!



NATIONAL NEWS

from the Farm to Cafeteria Canada Team



According to the Chinese calendar, 2015 was the year of the sheep. Sheep are one of the animals that people like most. Sheep are gentle and calm. This white cute creature often reminds people of beautiful things.

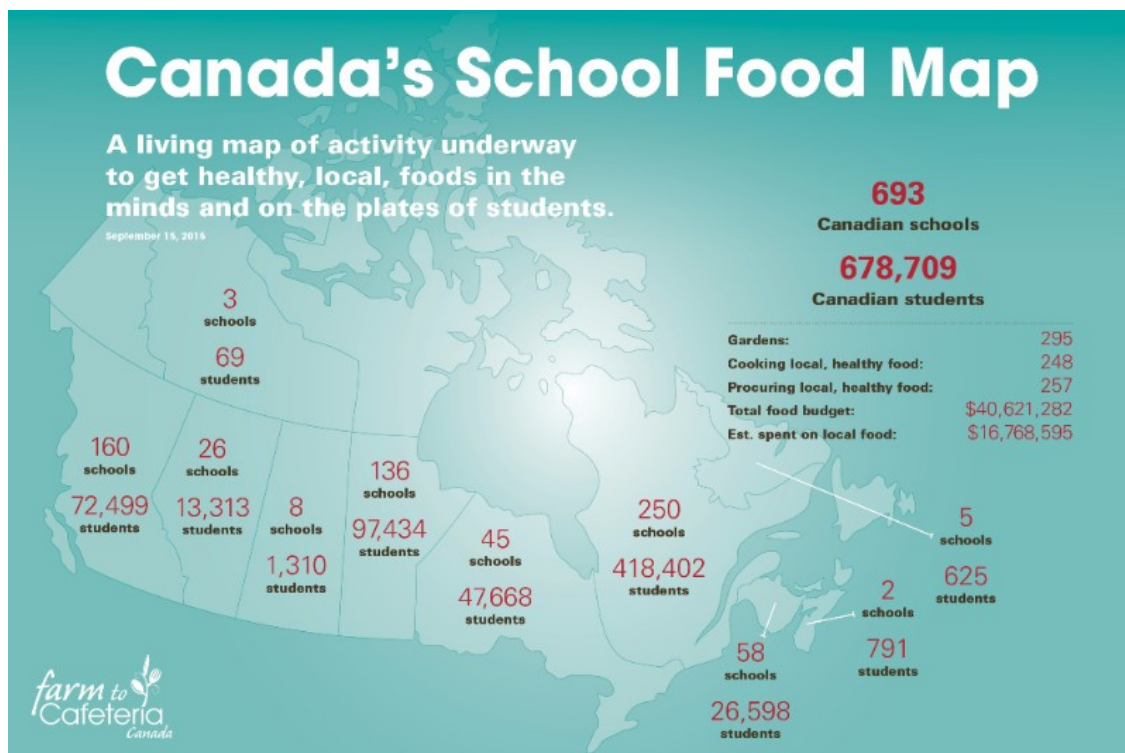
While we're not sure we would say 2015 was a gentle or calm year for Farm to Cafeteria Canada (F2CC), we can say with certainty - we attracted friends. **Thousands of friends! In 2015 our membership base grew 10 fold!** Today more than 3,500 individuals from a diversity of sectors right across the country have signed up as members or followers on our e-platforms. The estimated daily reach of F2CC and our principal partner organizations is 25,000. Moreover, in 2015 more than 700 schools and universities representing more than 700,000 students stepped forward to showcase their activities Canada's 1st **National School Food Map**.

Was it because we are cute, or warm, or that we remind people of beautiful things?



We suspect it was all three, and then some.

2015 Highlights



There is an exciting movement underway to get more healthy local foods into the minds and onto



Farm to Cafeteria Canada- Proud to lead the national Farm to School movement- Farm to School is everyone's movement. Every parent, every farmer, every teacher, every student, every level of government, and every funder has a part to play. [More](#)



The Storybook feature only some of the hundreds of initiatives and ideas taking root across Canada. The featured stories show how each initiative aims to include the three core elements of Healthy, local food; Hands-on learning; and School and community connectedness. [More](#)



The first national video celebrating Farm to School captures the voices and images of several key champions and success stories in the rapidly growing Farm to School movement across Canada. It was filmed in British Colombia, New Brunswick, and Ontario. [More](#)



Canada's second National Farm to School Month campaign reveals a kaleidoscope of activity that is varied and beautiful to behold. From coast to coast, teachers, parents, chefs, farmers and others sent in their illustrations illuminating fresh and innovative ways to get more healthy and local foods into young minds and tummies at school. [More](#)



Farm to Cafeteria Canada, the Heart and Stroke Foundation and Équiterre were pleased to co-host Canada's 1st School Food Conference. Entitled "Changing the Menu," it brought together 450 participants and speakers from across the country, with the aim of building a collective, national movement by connecting local and provincial initiatives. [Click here](#) for presentations and more.

Looking ahead: 2016 Year of the Monkey



This year's predictions sound like a perfect recipe for Farm to Cafeteria!

2016 for the Monkey : *"The energetic and ambitious Monkey is open to new ways of thinking and being this year. Competition is tough but some faith and doing a course/ workshop to master your craft is advised. The year ahead is good to strike new friendships, be more social, let your hair down and to achieve balance. Take care of your health with yoga, meditation, early morning walks. Go vegetarian few days a week to detox."* Source: Rediff

With a new Leadership Council in place, an announcement of a new National Farm to School Grant program, a growing map of school food activities, and a national government that is promising to further a national food strategy, we're looking to master our craft, grow our network,

Off to A Good Start

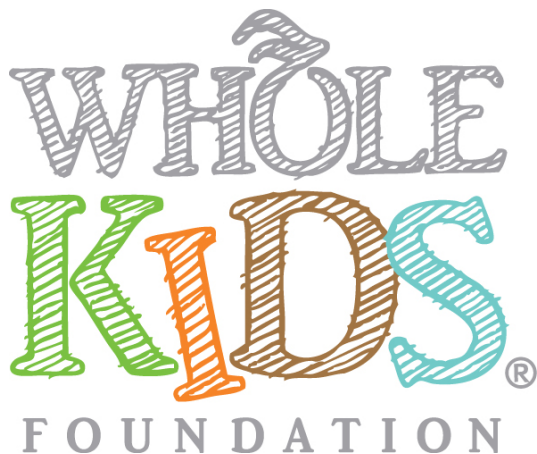
Farm to Cafeteria Canada is pleased to announce our new leadership team - a group of eight brilliant energetic sustainable food system advocates and practitioners who bring perspectives from communities right across the country to the table.



Farm to Cafeteria Canada Leadership : Top row, left to right: Joanne Bays, National Manager F2CC; Isabelle St-Germain, Leadership Council (LC) Member; Dr. Wayne Roberts, LC Member; Kristie Jameson, LC Member; Bottom Row, left to right : Laura Kalina, LC Member; Rachel Allain, LC Member; Scott Graham, Fiscal Manager; Kayla Atkey LC Member

For more information about our Leadership Council members, staff, regional leads, and partner organizations, please [click here](#).

Farm to Cafeteria Canada Partners with the Whole Kids Foundation to put a Local Crunch in Students Lunch with Farm to School Grants



We are pleased to announce a new Farm to School grant program that will deliver \$500,000 to schools in Ontario and British Columbia. These grants valued at up to \$10,000 will support bringing the local harvest to schools – engaging students and community in gardening, cooking, preserving, purchasing and serving healthy local foods in a salad bar service at school. [More](#)

More National Funding Opportunities



TD Friends of the Environment Foundation Leadership Grant

The Foundation supports a wide range of environmental initiatives, with a primary focus on environmental education, urban greening and enhancing biodiversity, and energy conservation.

Eligible projects include community gardens, environmental education projects, outdoor classrooms and more.

[Click here for more information.](#)



Toyota Evergreen Learning Grounds Grants

The Toyota Evergreen Learning Grounds program helps schools create outdoor classrooms to provide students with a healthy place to play, learn and develop a genuine respect for nature.

Up to \$3,500 is available for public schools and daycares located on school Board/District property.

[Click here for more information.](#)

Upcoming Events



Farm to School Salad Bar Webinar

Applying for the National Farm to School Grant Program?

Join us for a Farm to School salad bar webinar!

On the Agenda:

- Recipe for Success: Learn how St. Bonaventure's College in Newfoundland started their Farm to School salad bar. Presenter: Chris Peters
- Information session on the National Farm to School Grant Program: Joanne Bays, National Manager Farm to Cafeteria Canada
- Q & A period

Please Register here: <https://attendee.gotowebinar.com/register/62724031212141503490>

February 18: Farm to School Salad Bar Webinar

On the Agenda:

- Recipe for Success: Learn how St. Bonaventure's College in Newfoundland started their Farm to School salad bar.
- Information session on the National Farm to School Grant Program: Joanne Bays, National Manager Farm to Cafeteria Canada
- Q & A period

[Please Register here](#)



March 14: The Great Big Crunch

Since 2006, over 750,000 people have joined FoodShare for the **Great Big Crunch**, an annual moment of anti-silence where everyone gets together and bites into crunchy fresh local produce in unison. The symphony is loud, whether you munch on apples or carrots. From coast to coast to coast, celebrate and enjoy healthy snacking with your class, colleagues or friends. Using vegetables and fruits as stars in recipes and fun activities will make you cherish the local bounty around us all.

[Register to crunch](#)



April 1: Deadline to submit proposals to present at Food Secure Canada's 9th National Assembly

Do you have a message, a lesson, or a conversation to bring to **Resetting the Table**? Food Secure Canada is looking for plenaries, workshops, pecha kuchas and any creative event to bring the diverse voices of the food movement to the Assembly.

[Click here for more information](#)



June 2-4: 8th National Farm to Cafeteria Conference (USA)

The **8th National Farm to Cafeteria Conference**, a biennial event hosted by the National Farm to School Network that will convene more than 1,500 diverse stakeholders working to source local food for institutional cafeterias and foster a culture of food and agricultural literacy across America. Scholarships available until February 29th.

[Please Register here](#)

Do you have a story to share for the next edition of our newsletter?
Email us at farm2cafeteriacanada@gmail.com

For daily news follow us on



Copyright © 2015 Farm to Cafeteria Canada, All rights reserved.
You are signed up for the F2CC mailing list and/or are a member.

Has this newsletter been forwarded to you? Subscribe [here!](#)

For updates between issues, follow us on our [website](#), [Twitter](#) or [Facebook](#).

Contact us :
Farm to Cafeteria Canada
4445 Norfolk Street
Burnaby, BC V5G 0A7
Canada

