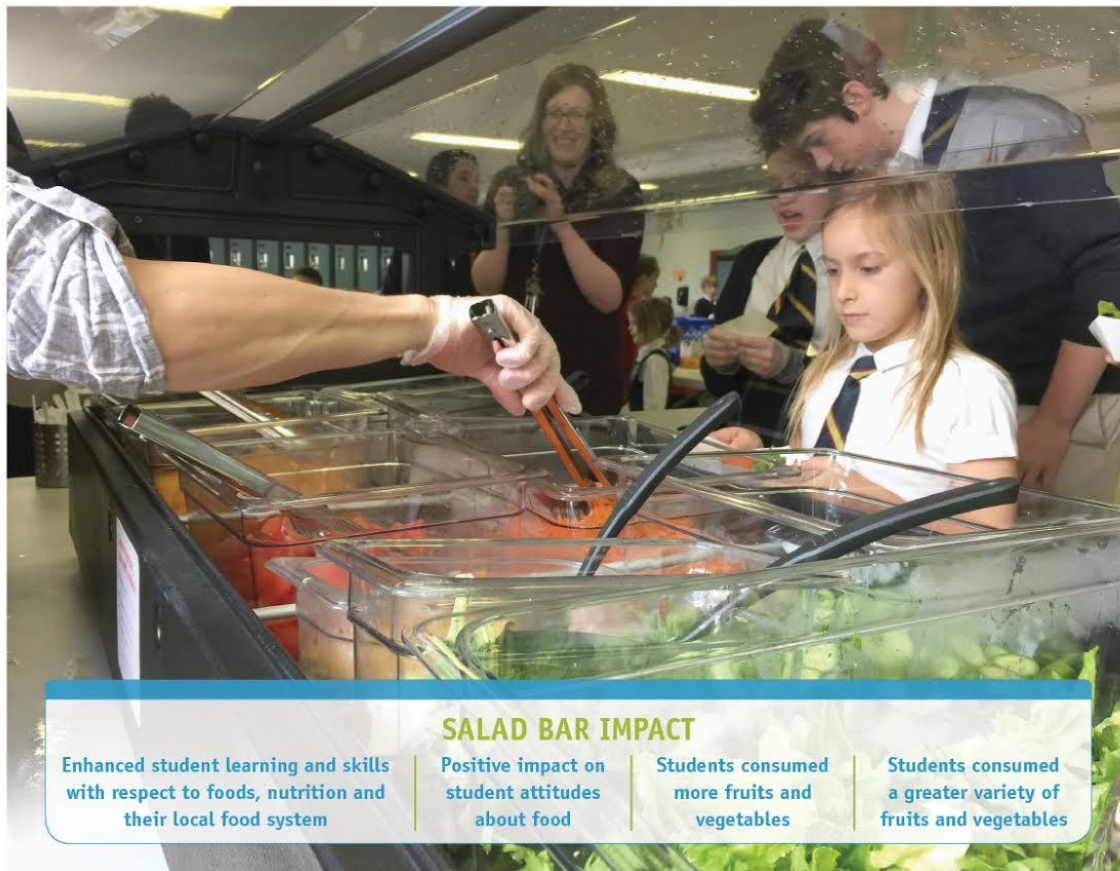


Call for Projects to Raise the Salad Bar in Newfoundland & Labrador's Schools

FOR IMMEDIATE RELEASE | JANUARY 17th 2018

St. John's, NL – Food First NL, Farm to Cafeteria Canada, and the Whole Kids Foundation are launching a call for projects for schools that want to make student access to healthy, local and sustainable food a priority. Thanks to a new pan-Canadian Farm to School Canada Grant program lead by Farm to Cafeteria Canada, up to three grants (valued at up to \$10,000 each) are available for schools that wish to engage students in a Farm to School salad bar program in Newfoundland and Labrador.

Salad bars: A great way to encourage students to eat fruits and vegetables



Students from St. Bonaventure's College Salad Bar program, St. John's, NL

"There is a food revolution afoot in Canadian schools. Parents, teachers, students, and food service workers are clamouring for a fresh local crunch in school lunch and local farmers and fishers are eager to deliver. We are excited about the opportunity to continue to seed, feed, and watch this movement grow!" says Joanne Bays, National Manager Farm to Cafeteria Canada.

"Farm to School salad bars serve delicious, healthy, local food to students in a way that is fun and strengthens our school communities. Food First NL is thrilled that this funding is available to support Newfoundland and Labrador's schools to start their own Farm to School salad bars!" says Sarah Ferber, Education Manager Food First NL.

The application deadline is March 31, 2018: <http://www.farmtocafeteriacanada.ca/our-work/farm-to-school-canada-grants/>

Farm to School: A growing movement

Farm to Cafeteria Canada is proud to champion the national Farm to School movement. F2CC works closely with Food First NL, its partner agency spearheading Farm to School efforts in Newfoundland and Labrador. Today, more than 11,000 schools and campuses across the country are providing more than 750,000 students with an opportunity to experience Farm to School through school gardens, cooking programs, salad bars and many other activities. These schools and campuses estimate they spend nearly \$16 million annually on local food.

The Farm to School Canada Grant program was created as a partnership between the Whole Kids Foundation (WKF) and Farm to Cafeteria Canada (F2CC). To date, the WKF has invested over \$1 million in this program designed to support school communities in their endeavours to get more healthy local foods on the minds and on the plates of students. F2CC is the national agency delivering the Farm to School Canada Grant program.

For more information:

Food First NL
Sarah Ferber, Education Manager
sarahferber@foodfirstnl.ca
(709)237-4026
www.foodfirstnl.ca

###